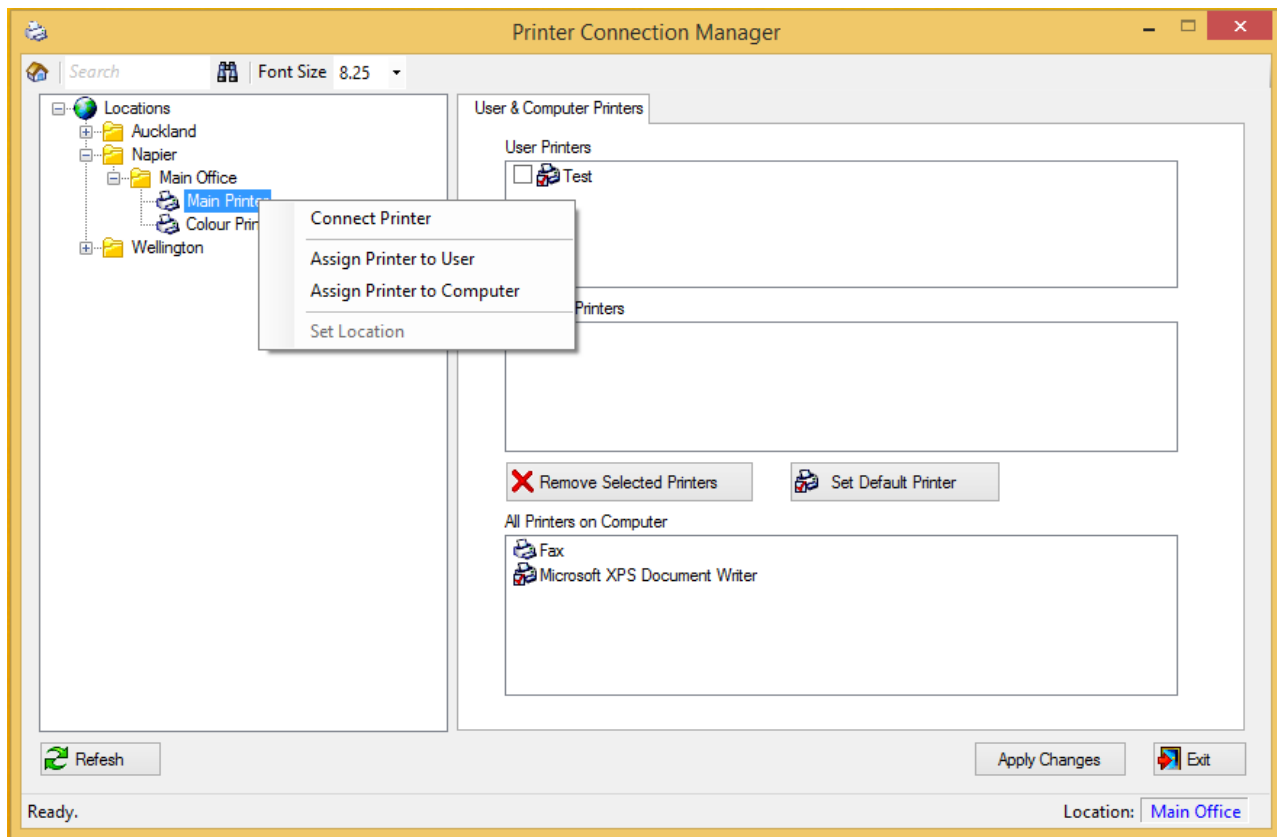


Printer Connection Manager



MENU OPTIONS:

- ***Connect Printer** – Will connect the printer, It will not be assigned to the user or computer accounts, Therefore will not reconnect on next logon. Used when you need to print a one off job to a particular printer
- ***Assign Printer to User** – Will assign the selected printer to the user account. So at the next logon the printer will be connected for this user. User can logon to any Computer.
- ***Assign Printer to Computer** – Will assign the selected printer to the computer account. Whoever logs onto the computer will get this printer.
- ***Set Location** – This will set/change the location for this computer. The location is displayed bottom right.

BUTTONS:

- Remove Selected Printers:** This button will remove the selected printers from the user/computer
- Set Default Printer:** This button will set the selected printer as the default, A user assigned default printer overrides the computer assigned default printer
- Apply Changes:** This button will run the logon portion of PCM and reset the user/computer printers

Tool Bar:

- ***Home Button:** This button will show the home location in the tree view (if location has been set)
- ***Search:** Enter printer name to search for and press search button
- ***Font Size:** Select font size to use (Default 8.25)

*These items are configured by an administrator and may not be available for all users.